

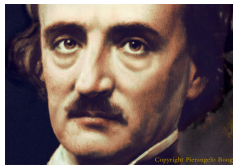
The Raven

A design analog worksheet to help refine your thinking, collect inspiration and reference and generate ideas for The Raven illustration assignment.

Illustration Assignment #2 - The Raven

Drawing Basics/Computer Art

Edgar Allan Poe
Edgar Allan Poe was an American author, poet, editor and literary critic, considered part of the American Romantic Movement and greatly influential to the Symbolist Movement.



Best known for his tales of mystery and the macabre, Poe was one of the first American writers to embrace the short

story and is widely considered the creator of the detective fiction genre. He is also credited with contributing to the emerging genre of science fiction.

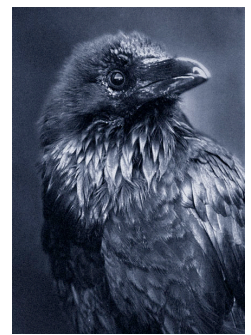
The Raven
"The Raven" is a narrative poem,

probably Poe's best know poem (or at least his most acclaimed by the general public). Published in January 1845, the poem is famous for its musicality, stylized language, and supernatural atmosphere. It tells

of a talking raven's mysterious visit to a distraught and grief stricken lover, and follows the man's slow decent into madness and paranoia.

Illustration
Illustration is the commercial field of

creating images to help tell stories.



If you had to pick an overall mood for the entire poem "The Raven" what would it be?
Hopelessness? Hopefulness? Fear? Grief? Anxiety? Joy?

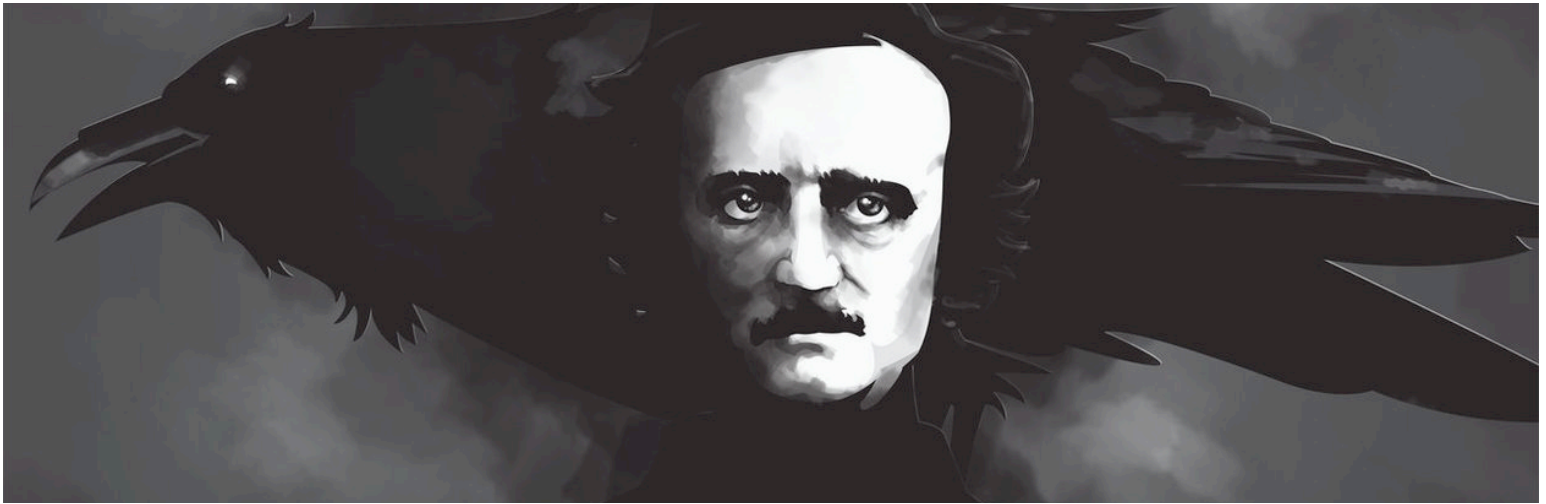
What is it about the poem that creates this feeling or mood? Be specific.

If you had to pick a mood or feeling for your verse, what would it be? Would it be the same as the overall feel of the poem or different?

What gives the verse this feeling – be specific?

What do you think the entire poem is about? Whats going on?

What is your verse about? Whats happening in your set of lines that advances the story?



Literary Symbols



Rachel Mork defines Literary Symbolism as the author using an object or reference to add deeper meaning to a story. Symbolism in literature can be subtle or obvious. An author may repeatedly use the same object to convey deeper meaning or may use variations of the same object to create an overarching mood or feeling.

What sort of literary symbols does Poe use in this poem? What do the symbols represent? Give at least two examples.

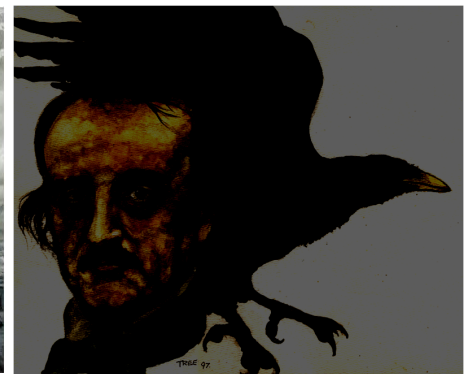
Descriptive Language



Poe is a very visual writer, often describing things in vivid detail for the reader. Painting pictures with words. Does Poe describe anything in your verse? If so what?

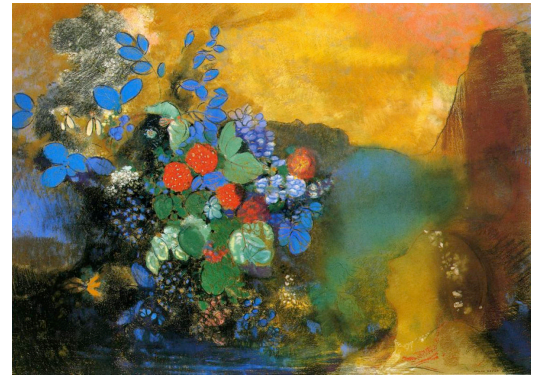
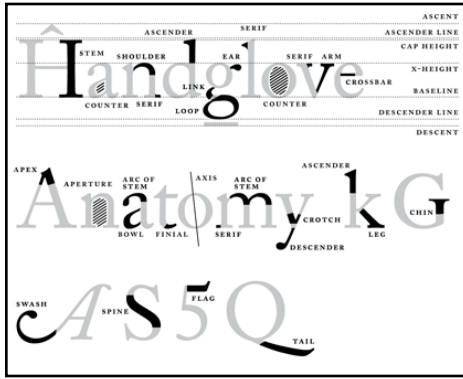
What does his description make it feel like – how does it look in your minds eye?

Vocabulary (mood establishing/unusual)



The Raven is known for some very unusual vocabulary (although it wasn't all that strange in Poe's time).

Were there any unusual words in your verse, and if so - what do they mean?



Symbolism and Symbolists

What does *symbolism* mean...

At what period of time did the *Symbolists* work and what was their inspiration/subject matter?

Give an example of two symbolist painters and explain why you like or think their work could be inspirational for this project.

Typography

Both words and the way they are formed express ideas as well - communicating through the shape and form of text is called typography.

In the box below, print or write the word RAVEN in a font that you feel captures the mood of your verse.

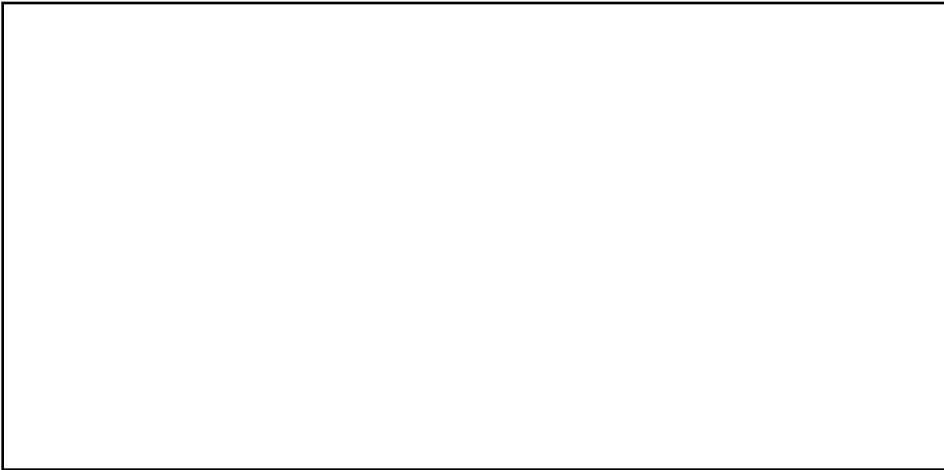
You may use upper or lowercase letters, or a combination of both.

What about this font suggests this feeling to you?

Color Psychology

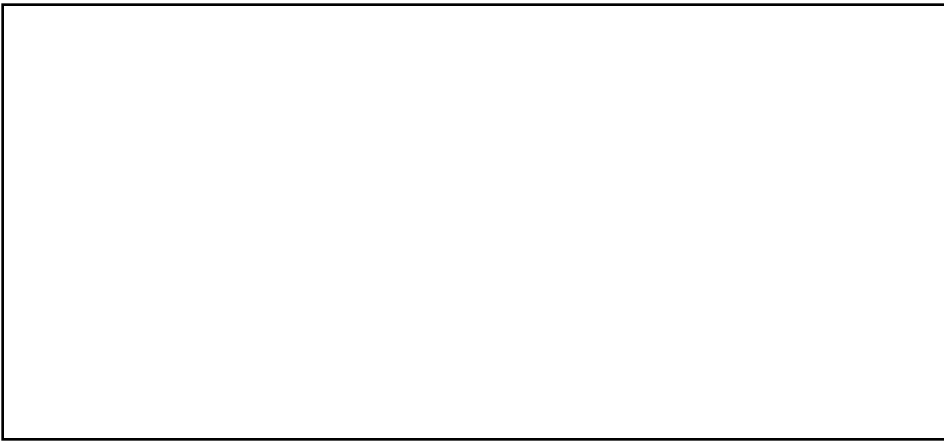
Color Psychology is the idea that human associate certain colors with certain moods, feelings, emotions, personality traits or even far more abstract concepts. The "bad guy" wearing black for example or a bride wearing white, or red being associated with both love and danger.

In the boxes below, place 4 colors you feel accurately represent the feeling or mood of the poem (and look good together at the same time).



In the box to the left, paste or tape an example of a landscape photograph that you feel captures the mood or feeling of your verse.

Think about the land (or sea) features as well as the sky. Why does this photo represent your verse?



In the box to the left, create a rubbing of a texture that you feel represents, somehow, the feel of your verse. Why does this texture represent your verse?

In the box to the right, tape a photograph of a face that you feels captures the feeling or mood of the poem and of your verse in particular. What about this face made you choose it?



In the box to the right, tape a photograph of a house or building that you feels captures the feeling or mood of the poem and of your verse in particular. What about this piece of architecture made you choose it?



In the box to the right, tape a photograph of a fabric swatch that you feels captures the feeling or mood of the poem and of your verse in particular. What about this piece of cloth made you choose it?

